

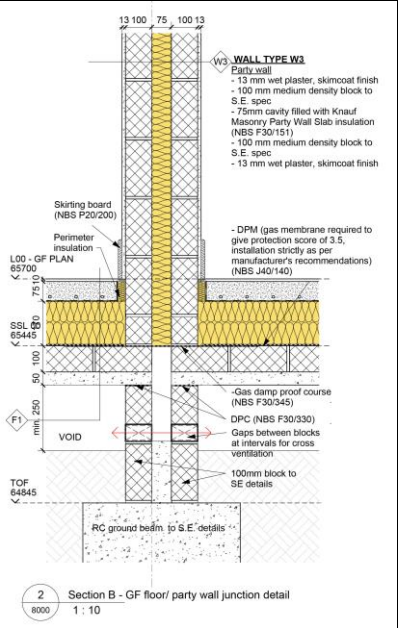
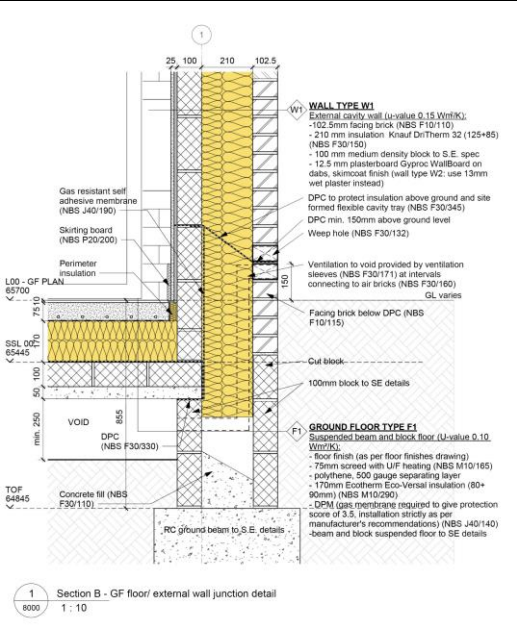
ANNA WAREHAM ARCHITECTURE

PORTFOLIO



PROJECT: COLLINS STREET, OXFORD

STAGE 4-7. CURRENTLY ON SITE
ROLE: PROJECT ARCHITECT
DESCRIPTION: 14 RESIDENTIAL APARTMENTS FOR OCC, 4 STOREYS BUILDING, PART M4. (2)
FLATS
CONTRACT: DESIGN AND BUILD



RESIDENTIAL

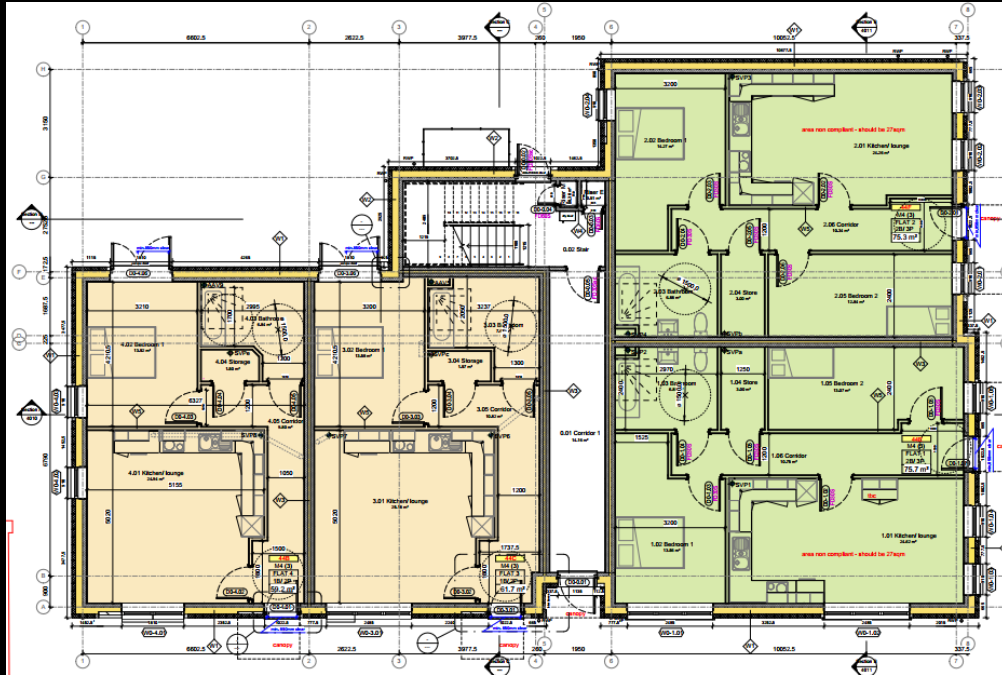
PROJECT: PRINCES STREET, OXFORD

STAGE 4-7. CURRENTLY ON SITE

ROLE: PROJECT ARCHITECT

DESCRIPTION: 12 RESIDENTIAL APARTMENTS FOR OCC, 3 STOREYS BUILDING, PART M4. (2) & PART M4. (3) FLATS

CONTRACT: DESIGN AND BUILD



RESIDENTIAL

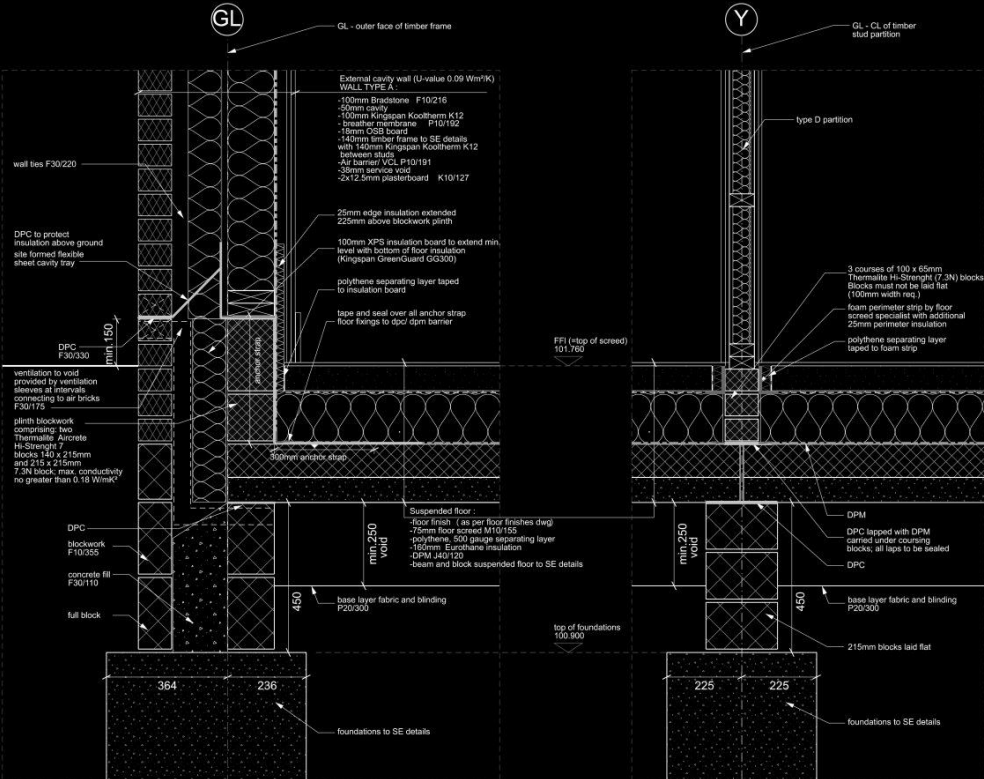
PROJECT: BULLMARSH CLOSE, MIDDLETON STONEY, OXFORDSHIRE

STAGE LATE 3-7, COMPLETED MAY 2021

ROLE: PROJECT ARCHITECT

DESCRIPTION: 3 NO. 2-BEDROOM BUNGALOWS TO PASSIVHAUS INSTITUTE (PHI) LOW ENERGY BUILDING STANDARD. HIGH PERFORMANCE COUPLED WITH FLEXIBLE ACCOMODATION TO ACHIEVE PART M4(2) AND M4 (3).

CONTRACT: JCT INTERMEDIATE BUILDING CONTRACT WITH CONTRACTOR'S DESIGN



Detail 01 - Floor/ wall section

1:10 @ A3

Detail 02 - Internal wall section

1:10 @ A3



RESIDENTIAL

PROJECT: TWO WATER ROAD, HEMEL HEMPSTEAD

STAGE LATE 1-3

ROLE: PROJECT ARCHITECT

DESCRIPTION: RESIDENTIAL DEVELOPMENT OF 39 FLATS, 16NO. 1-BED, 20 NO 2-BED AND 3NO. 3-BED UNITS WITH PARKING, LANDSCAPING AND EMENITY SPACE.



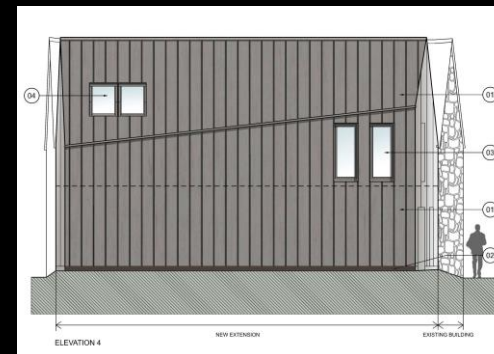
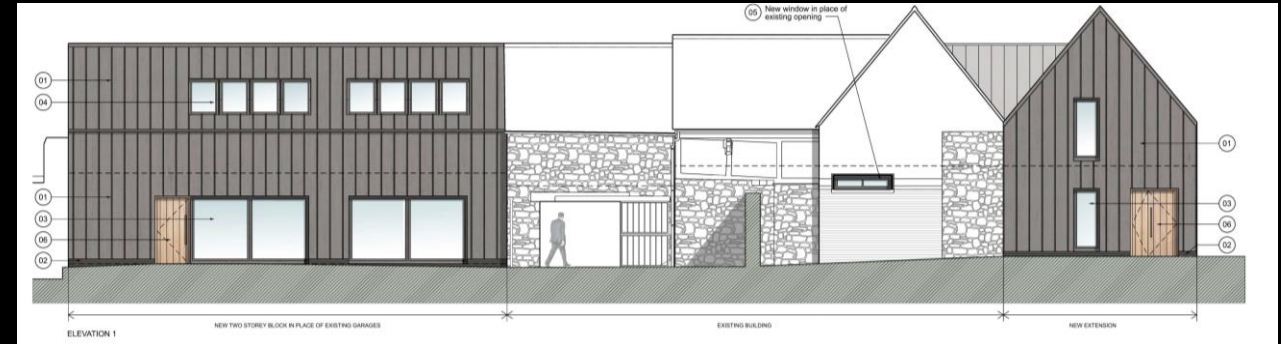
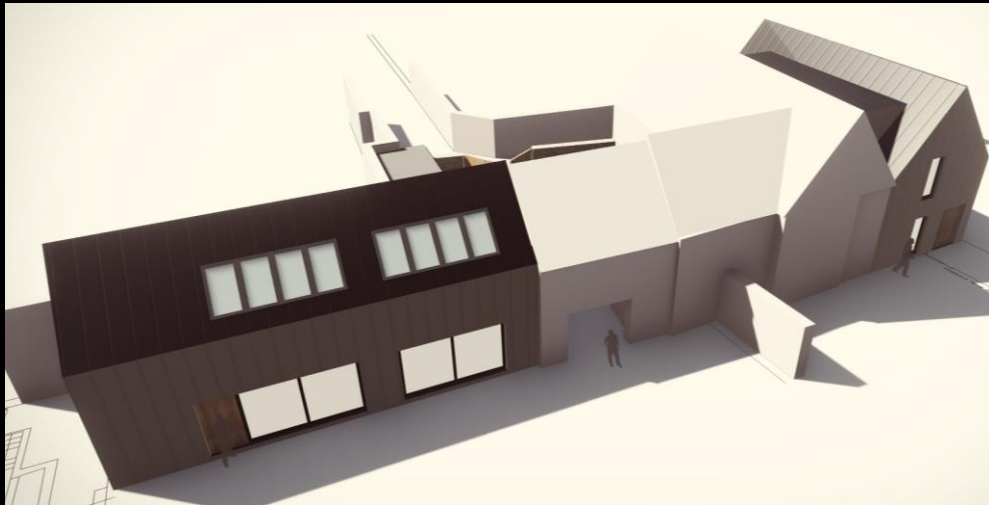
RESIDENTIAL

PROJECT: ST. JOHN'S BARN, ST. JOHN'S COLLEGE OXFORD

STAGE 1-2

ROLE: PROJECT ARCHITECT

DESCRIPTION: REFURBISHMENT AND EXTENSION OF BARN TO CREATE NEW ACCOMODATION FOR ESTATE SERVICES. LOCATED WITHIN THE CONSERVATUION AREA AND ADJACENT TO LISTED BUILDINGS.



EDUCATION

PROJECT: EWERT PLACE, SUMMERFIELDS SCHOOLM, OXFORD

STAGE 1-4, ONGOING

ROLE: PROJECT ARCHITECT

DESCRIPTION: NEW BOARDING HOUSE BUILDING COMPRISING 35 BEDSPACES, A 4-BEDROOM LODGE PARENTS' HOUSE, 3 NO. 2-BED LODGE ASSISTANTS' FLATS AND GROUND FLOOR COMMON AREA, SET OVER 3 FLOORS IN A SECLUDED COURTYARD WITHIN THE SCHOOL GROUNDS,
VALUE: £3M



EDUCATION

PROJECT: SHEARWATER HOUSE, RICHMOND, LONDON

STAGE 4-7

DESCRIPTION: REFURBISHMENT AND EXTENSION OF OFFICE BUILDING COMPRISING ROOF SPACE CONVERSION, CREATION OF NEW LIFT CORE IN THE REAR COURTYARD AND INTERNAL REFURBISHMENT OF 3 OFFICE FLOORS. SITE LOCATED IN CONSERVATION AREA. SPECIFICATION OF SUSTAINABLE MATERIALS TO MEET BREEAM REQUIREMENTS. CONTRACT: DESIGN & BUILD



OFFICES

PROJECT: BANBURY MUSEUM, BANBURY, OXFORDSHIRE

PHASE 1 (£200K) AND PHASE 2 (£5.5M)
ROLE: PROJECT ARCHITECT
DESCRIPTION: MUSEUM REFURBISHMENT AND EXTENSION TO HOUSE ENLARGED GALLERIES, LECTURE. FILM AND PRIVATE HIRE AREAS
PHASE 1: COMPLETED NOV 2018, STAGE 2 ONGOING

The project is being delivered in two phases. The first phase sees the creation of the new PYE Gallery and refurbishment of the main public circulation spaces. The new PYE Gallery includes the reconfiguration of the reception spaces and access to the first-floor museum allowing two galleries on the ground floor to be combined to form a much larger temporary exhibition space suitable for accommodating touring exhibitions from national museums and galleries.
The second phase extension is sited on the space currently occupied by the Museum's loading bay and where an additional penthouse floor will be added. Designed to create a landmark building at the centre of the Castle Quay 2 development.



MUSEUM

PROJECT: HIGH-END RESIDENTIAL PROJECT IN OXFORDSHIRE



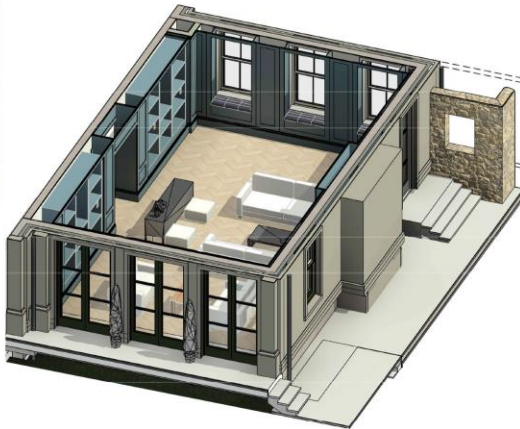
Paneling
Full height
Painted rich colour
Simple vertical expression



Fixtures + Furniture
- Natural materials to complement the room



Floor
- Light colour to contrast with panelling
- Either stone or timber
- Large rugs to zone areas



Ceiling
Exposed structure to gain a greater height.
- Beams plastered and painted (reinforced concrete or steel)
- Soffit's painted timber tongue and groove treatment



Fire Place
- Ashlar stone to tie into external
- Contemporary Georgian design and proportions
- Light colour to contrast with dark panelling

Paint Palette

Simply White	Down Pipe	Royal Orchard
Alabaster	Hale Navy	Isle of Pines
Repose Grey	Cobblestone Path	Soot
Chelsea Grey	Storm Cloud	Black Magic