

# CENTRAL SURREY HEALTH

Consolidation of systems and alignment of patient care with GP practices across the Surrey Heartlands.

## CASE STUDY

### Overview

---

Following a review of patient care strategy in Surrey, Central Health Surrey (CSH) decided to transition to a new electronic patient record system – EMIS, a primary care system used by most GP Practitioners within the Surrey Heartlands.

### Process

---

CSH required a partner with experience in delivering extensive IT projects. Following a tender process that involved 4 suppliers, Keystream was selected as the delivery partner due to our EPR implementation credentials, pricing model and project processes.

### Objectives

---

To deliver a transformational change programme that would consolidate the four separate Electronic Patient Record (EPR) systems in use at CSH with 3 main objectives

#### Scope

---

Ensure the new platform fits with CSH's existing business processes and personnel requirements.

#### Training

---

Deliver comprehensive training to practitioners and staff to ensure smooth transition

#### Delivery

---

Ensure timely delivery of technical, engineering and data workstreams.



## Solution

As part of the deployment Keystream designed and implemented the following resource profile:

- Programme Manager
- Data Migration Lead
- Data Engineer
- Transformation Lead
- Communications Lead
- PMO
- Technology Lead
- Clinical Systems Administrator

## Results

CSH successfully went live with the CarePlus child health system from System C in March 2020.

**3** months for project delivery

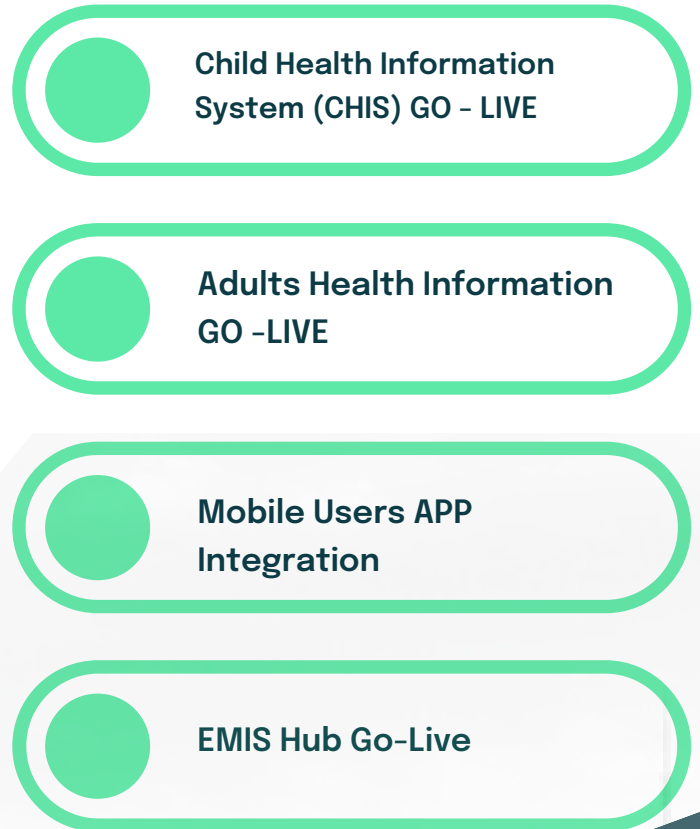
**500+**

NHS users now use the new platform.

This project saw Surrey create a new CarePlus system which presents a child's health information digitally to health professionals and parents at point of care. It is just one of three national health systems linked to NEMS,

The CarePlus system will give easy access to records such as birth details, immunisations and screening records for all children in Surrey, supporting pre-school and school health programmes of care

## Timeline



CSH  
Surrey

“

**Keystream's team of Consultant's were passionate, committed, technically excellent and withstood the many challenges the project threw at them. All of the key resources saw the project through to completion and have delivered a highly successful programme, on time and within budget. Keystream were competitively priced, efficient and dedicated to delivering high levels of service. I wouldn't hesitate to recommend Keystream as a resource partner for large scale EPR deployments.**

PETE CAIRNS

HEAD OF INFRASTRUCTURE SERVICES

## CONTACT US

+44 (0)20 7256 6111

hello@key-stream.com

4 Tabernacle Street, London EC2A 4LU